



This leaflet was prepared by the Wolsingham Wayfarers, an independent voluntary group, dedicated to monitoring, looking after and promoting the 140 miles of designated footpaths in the Wolsingham Parish.

WWW

wolsinghamwayfarers.co.uk



WolsinghamWayfarers



@WolsWay

Walk information

DISTANCE - 7 miles (10.9km).

MINIMUM TIME - 4 hours.

ELEVATION GAIN - 204m (670ft).

LEVEL OF DIFFICULTY - Moderate.

PATHS - Farmland field paths, riverside tracks, one difficult stile over a wall.

STILES - 15 stiles and 4 ladder stiles.

PARKING - Demesne Mill Picnic Area.
Nearest postcode DL13 3DB.

PUBLIC TOILETS - At the junction of Market Place and Angate Street.



Please follow the
Countryside Code

Prepared on behalf of the people of Wolsingham by the Wolsingham Wayfarers and Durham County Council.

PRINTED MAR 2015



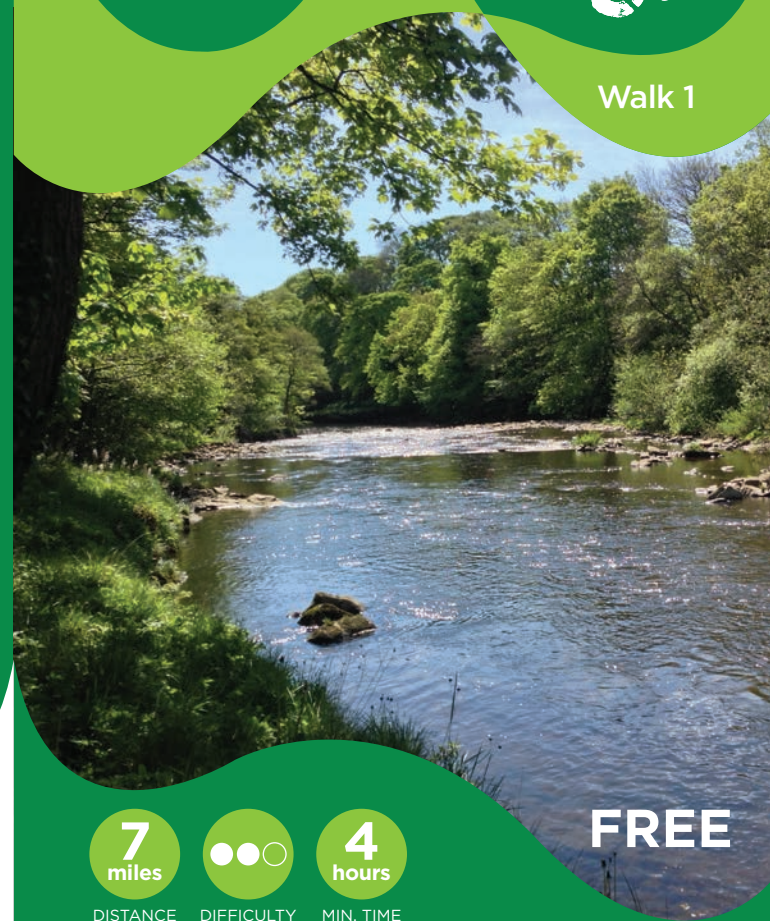
Wolsingham Circular Walks

Memorial Walk

A circular walk between the Wolsingham and Thornley war memorials.



Walk 1



7
miles

DISTANCE



DIFFICULTY

4
hours

MIN. TIME

FREE

About the Memorial Walk

The Wolsingham Wayfarers first traversed the route between the Wolsingham and Thornley war memorials in May 1995 on the 50th anniversary of World War II. Wolsingham is also home to the first memorial to the First World War. In March 1918 Wolsingham Grammar School planted eighteen oak trees lining the playing field, one for each student killed in the First World War.

The route showcases the best of everything Weardale has to offer. Enchanting riverside woodland, large expanses of farmland, picturesque cottages and stunning views across the valley.

Welcome to wonderful Wolsingham



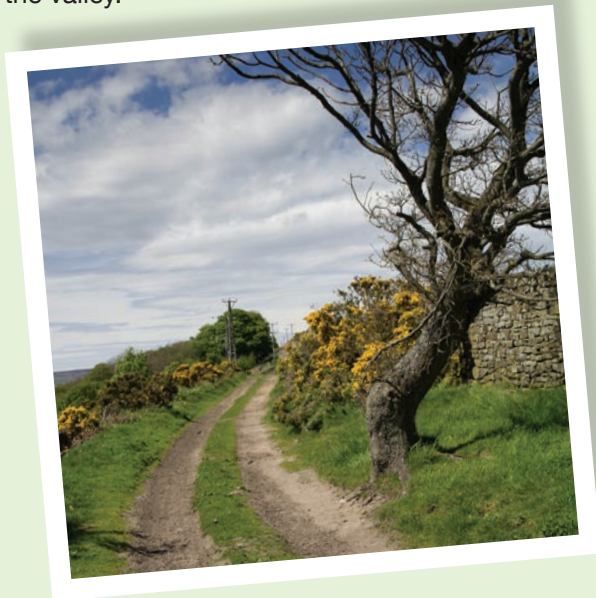
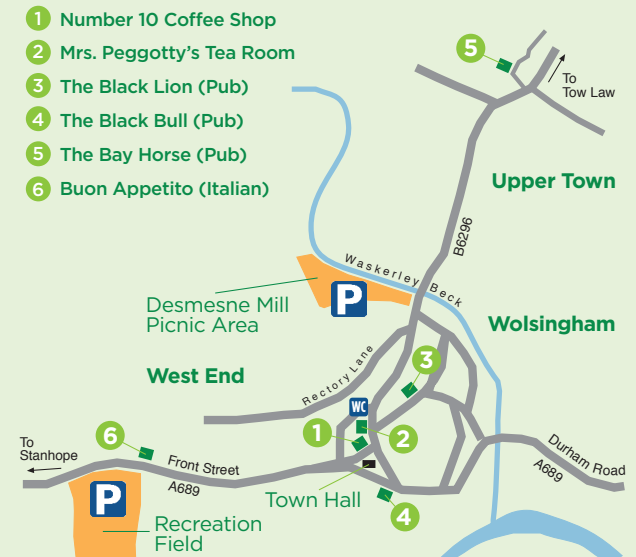
This is one of a series of walk leaflets produced by the Wolsingham Wayfarers, created to showcase Wolsingham's extensive public footpath network. With more than 140 miles of designated footpaths, most of them interlinked, there are plenty of opportunities for creating your own circular walks. A map showing all the footpaths in Wolsingham Parish can be found on the wall of the Town Hall in Wolsingham Market Place, opposite the Post Office. Walks from Wolsingham are covered by OS Explorer maps 307 and OL31.

Ample parking for walkers is provided at Demesne Mill Picnic Site (off the B6296 Tow Law road) and at the Recreation Field (off the A689 Stanhope road). Visitors are asked to keep the market place in Wolsingham clear for local shoppers and library users. The amount of time you can park in the market place is also restricted. For information on public transport ring Traveline on 0871 200 22 33.

Several tea shops, cafes and pubs are shown on the map below. They offer good food and a very welcome drink at the end of a long walk. A few also offer accommodation.

The Wolsingham Wayfarers run regular free guided walks, a great way to discover new paths and routes. Check out our website and social media pages for up-to-date information on walks and activities (information on back page).

Wolsingham's parking and facilities

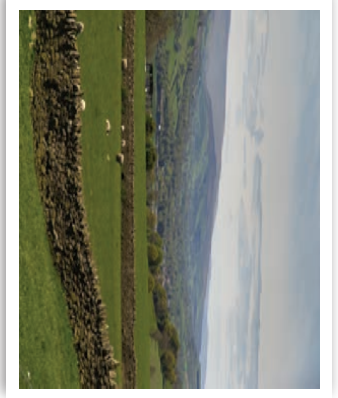
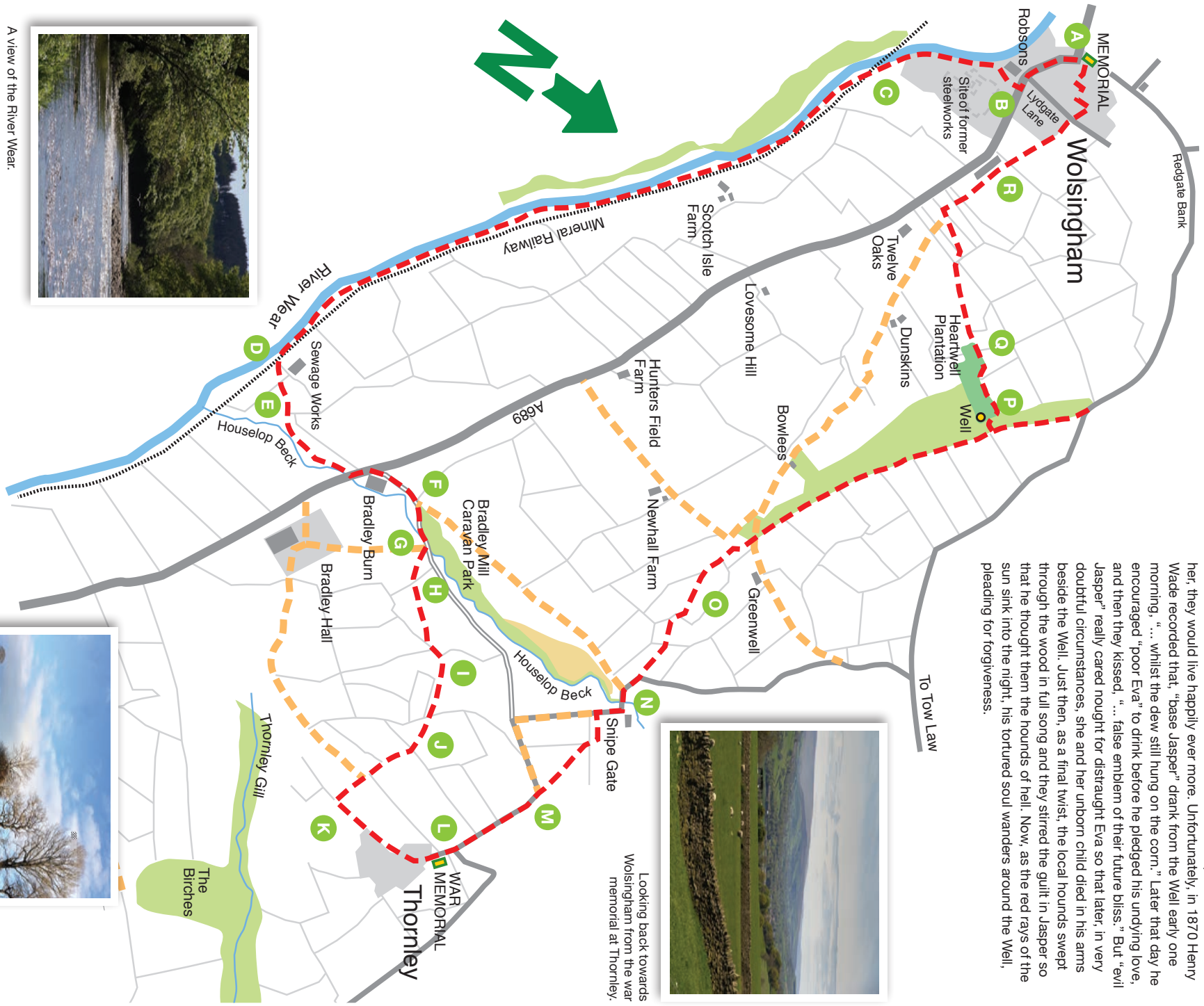


**VIEW MAP
THIS WAY** 

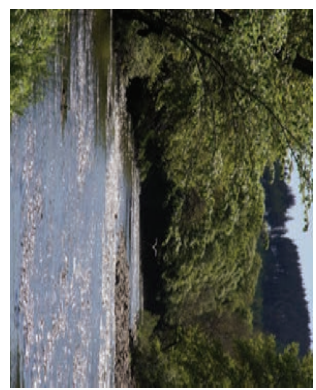
-  Circular Walk
-  Alternative Routes
-  Wooded Area
-  Railway

The Heart Well (at point P)

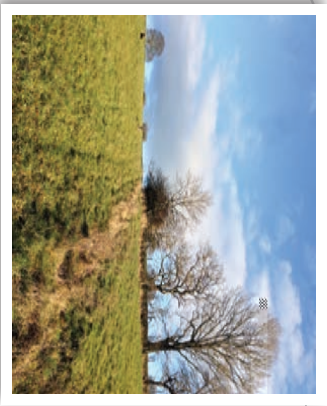
As you pass the site of Heart Well, just over the wall on your left, spare a thought for the young lovers who tarried there with such tragic results. This former well was supplied by a natural spring unaffected by drought or deluge. From this enduring flow sprang the legend that if a maiden was the first to drink before her beau professed his love for her, they would live happily ever more. Unfortunately, in 1870 Henry Wade recorded that, "base Jasper" drank from the Well early one morning, "... whilst the dew still hung on the corn." Later that day he encouraged "poor Eva" to drink before he pledged his undying love, and then they kissed, "... false emblem of their future bliss." But "evil Jasper" really cared nought for distraught Eva so that later, in very doubtful circumstances, she and her unborn child died in his arms beside the Well. Just then, as a final twist, the local hounds swept through the wood in full song and they strided the gulf in Jasper so that he thought them the hounds of hell. Now, as the red rays of the sun sink into the night, his tortured soul wanders around the Well, pleading for forgiveness.



Looking back towards Wolsingham from the war memorial at Thornley.



A view of the River Wear.



The old field boundary at point I.

If you have parked at Demesne Mill off the B6296 (Wolsingham to Tow Law Road), start your walk by heading back out of the car park through the main entrance and turn right down Angate Street until you reach Wolsingham Town Hall in the market place.

A Leave Wolsingham market place (the war memorial is at the side of the Town Hall) and head east (left if you're facing the Black Bull) along East End road, crossing the bridge and continuing past Robsons Caravans.

B The route enters a narrow public footpath on the right (signposted by a fingerpost) running alongside Robsons Caravans (next to the bus stop).

C Follow the footpath and once the railway is crossed the landscape of the village's industrial history gives way to the dynamic repose of the River Wear.

D Continue on the riverside track for one and a half miles, eventually crossing back over the railway line at the sewage works (signposted Bradley Hall No.2).

E Go over the ladder stile on the other side of the railway line, across the field and over another stile onto the path. Turn right and follow the path to the A689 road. Cross the road and head left, entering Bradley Burn Farm via the main entrance.

F Follow the road passing the shop and cafe on your right and keep right through a kissing gate next to a cattle grid entrance.

G Leave the road and head over the grassy mound on the right and over the footbridge crossing the Houselop Beck.

H Continue left up the slight bank and take the stile on the right into the field. Head diagonally left across the field to another stile.

Head right diagonally across the next field to another stile and cross a small footbridge on the other side of the fence.

Turn immediately left and head into the corner of this field where you'll need to cross another small plank footbridge and stile.

I Stay left for 20 metres until you reach the old field boundary (there is no fence or wall at the boundary, just a grassy tuft running up the field). Turn right and follow the boundary uphill towards a kissing gate in the top right corner of the field.

J Once through the kissing gate head up the bank and diagonally right towards the field gate in the centre of the field fence (visible when you get over the brow of the hill).

Once through the field gate keep the fence to your left and continue on through three more field gates.

K Turn left up the track to the farm house and out onto the road. Follow the road to the left eventually coming to the Thornley memorial, a sad reminder that even the smallest hamlet could lose several young members of the community.

L The return journey begins along the tarmac road to the left of the memorial.

Alternative route. After bad weather, the route described in section **M** can be extremely boggy and hard to pass. To avoid this route simply continue on the road and follow it all the way to Snipe Gate at the bottom, picking up the instructions again at **N**.

M As the road turns left, take the second ladder stile into the field and head diagonally to the far corner. Pass through the gate and 40m later turn left and go over the stile into the adjoining field. Go straight over the field keeping the field boundary on your left. In the far corner of the field go over the stile and wooden walkway on to the road beyond. Turn right and down the road to Snipe Gate.

N At Snipe Gate follow the road as it takes you left up the bank. At the top of the bank and just after the road turns right, climb the stile over the stone wall on your

left marked with a public footpath sign.

Continue straight on, staying on the right hand side of the field, towards a large wooden stile bridge into the next field. Cross straight over this field and over another stile.

O Cross the field heading towards a ladder stile over the apex of a stone wall. The right of way is across the field staying left of the large tree in the centre.

Once over the ladder stile and with Greenwell Farm on your right, follow the wall to a stile and out of the field and on to a track. Go straight on and then keep right to follow the track up on to Greenwell Edge, where extensive views of the Dale open out.

P Follow this track through four more field gates, turning left downhill at the fourth gate (waymarked) towards a stile, which takes you over a wall.

CAUTION: The drop is much bigger on the other side of the wall with three stone steps taking you down.

Q Turn right over the wall and follow the waymarker downhill, keeping the fence on your right. Go over the stile at the bottom and head right, crossing over a small beck and again following the fence down the hill to a stile. Head straight over the next field towards another stile. Head diagonally right across the next field to a stile about half way down the boundary. Take the plank footbridge to another stile. Then walk diagonally left down to a small field gate, before going right over a stile and straight on to another stile.

R Follow the path around the back of the houses to a gated stile and then on to a metal gate. Continue around the back of Fletcher's Marques to a kissing gate and follow the path around the back of the houses. Cross over the road to The Garth and down the alley. Turn left out of Lydgate Avenue and down another alley on your right taking you into Willow Park (known locally as Duck Lane). Cross the Waskerley Beck footbridge and along Meadhope Street, passing (or stopping for a pint at) the Black Lion before returning to the market place and the end of our walk.